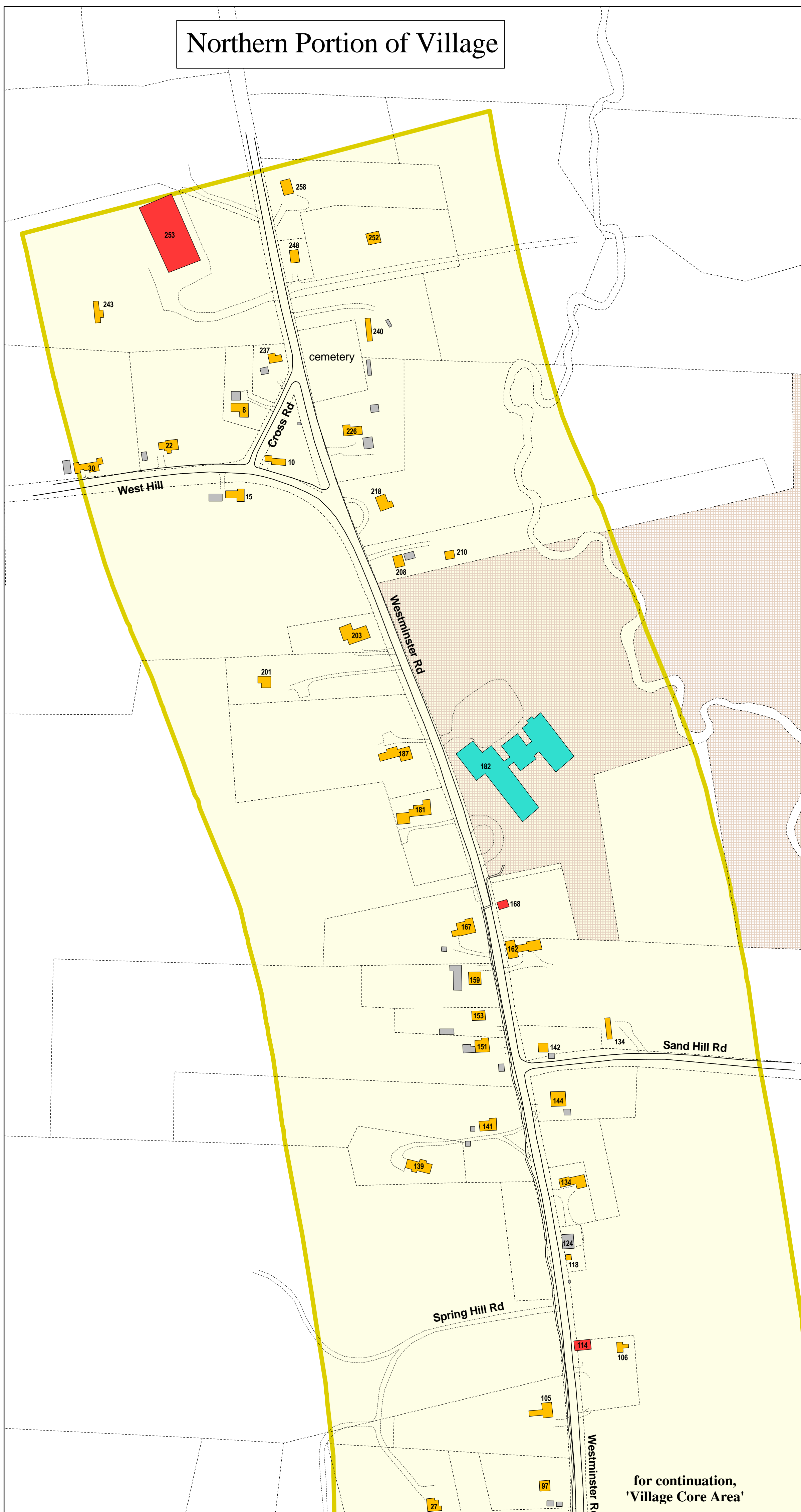
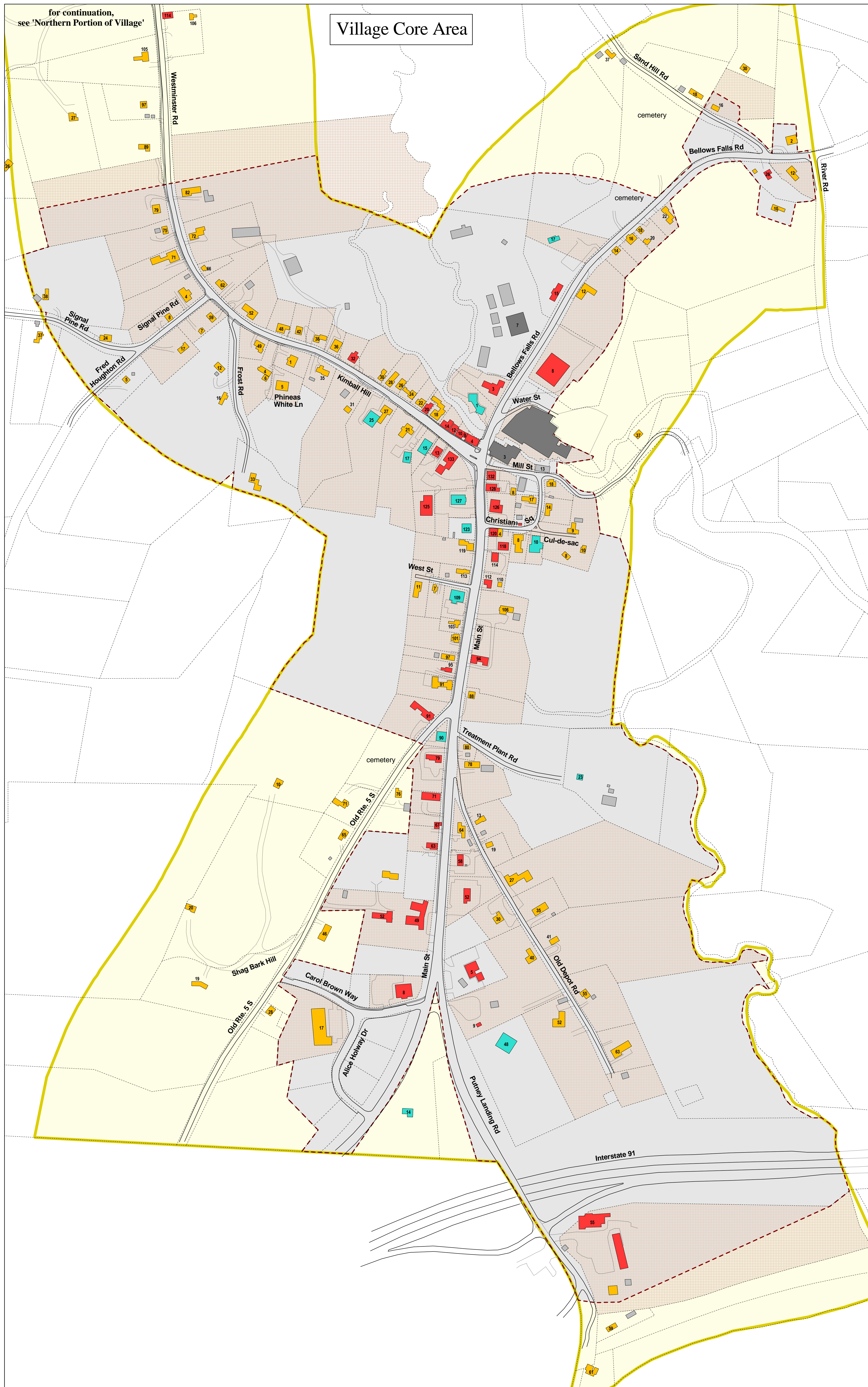


Northern Portion of Village

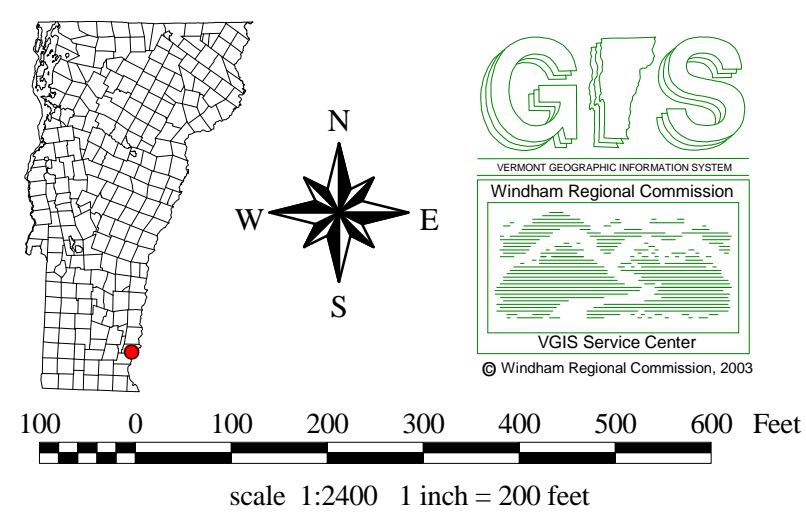


for continuation, 'Village Core Area'

Village Core Area



Putney Village Inventory Putney, Vermont



- | | | |
|---|--------------------|-------------------------|
| Buildings (with street address): | Parcel line | Village zoning district |
| Commercial | Street, roadway | Sewer district |
| Industrial | Sidewalk | Parcel served by sewer |
| Public/municipal | Drive, parking lot | |
| Residential | | |
| Accessory | | |

Data sources:

- Parcel lines are from GIS data developed by Cartographic Technologies, Inc. (CTI), Brattleboro, Vt., and are current to 2002. These data are based upon a previous set of parcel maps created at a scale of 1:5000. Parcel lines have been modified slightly by WRC for better cartographic representation.
- Building footprints were developed by the Windham Regional Commission in 2002 using 1:5000 digital orthophotos and field mapping. Building use information are from WRC field visits and from information provided by the Town of Putney.
- Building addresses are from Enhanced 911 data (VGIS data layer ESITE).
- Road, sidewalk, and driveway locations were developed by the Windham Regional Commission in 2002 using 1:5000 orthophotos and GPS field data. The data were developed to show the approximate location and extent of roads and sidewalks in the village.
- Information on sewer service and the sewer district were developed by WRC using information provided by the Town of Putney.